

Device Replacement Tool



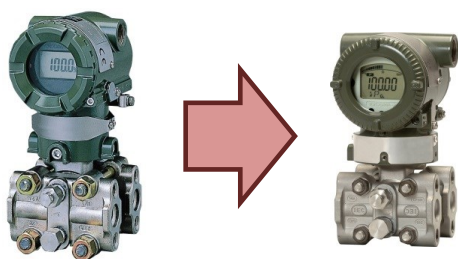
Introduction

When a device is being replaced in the field, this tool uploads the HART Data from the old transmitter and downloads it to the new HART transmitter. This tool is part of FieldMate R2.05.

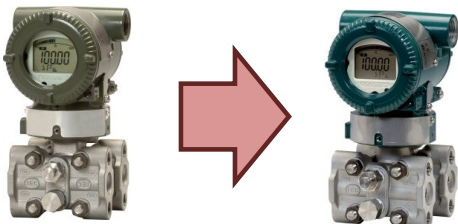
This tool will work with any manufacture's HART pressure transmitter.

For example:

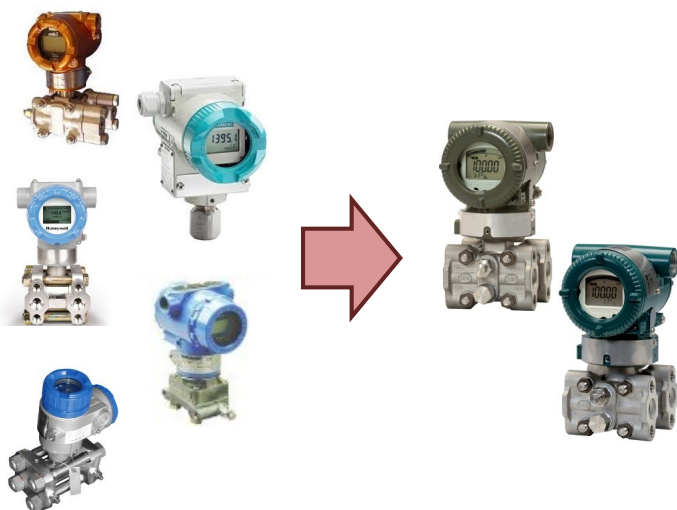
⇒ The tool can be used to replace a HART EJA-A with a HART EJA-E.



⇒ The tool can be used to replace a HART EJA-E with a HART EJX-A.



⇒ The tool can be used to replace a Competitor's HART transmitter with any Yokogawa HART transmitter.



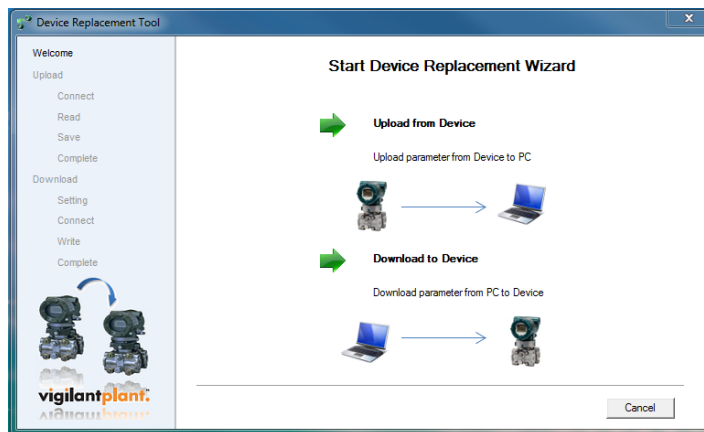
Procedure

The Device Replacement Tool is located in the FieldMate Folder on your hard drive. The FieldMate folder can be accessed by:

Start Button > All Programs > FieldMate



Click the Device Replacement Icon



The main menu page for the Device Replacement Tool is displayed. It will step through the upload and download procedure.

