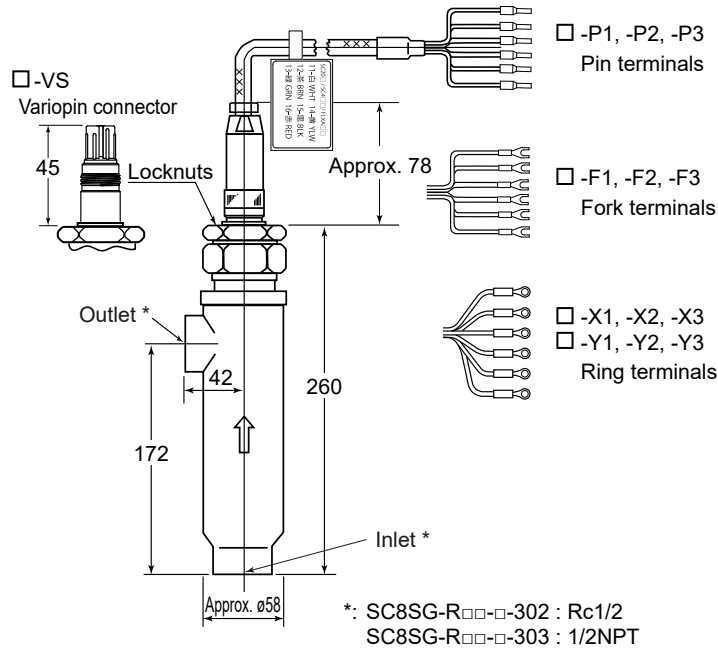


Drawings

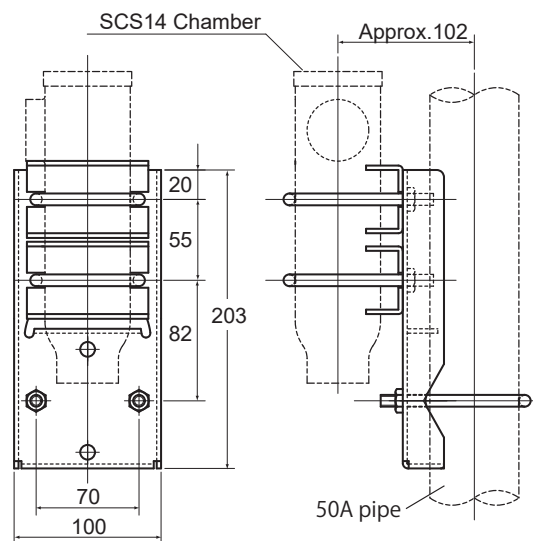
SC8SG - R□□-□-302 SC8SG - R□□-□-303 Flow-through type Conductivity detector (for Screw connection)

Unit: mm



Weight : Approx. 3.1 kg (excluding the cable)
Cable : 5.5m length : Approx. 0.3 kg
10m length : Approx. 0.5 kg
20m length : Approx. 0.9 kg

□ Mounting hardware (Option code : /SS)



Weight: Approx. 1.9 kg

Unless otherwise specified, differences in the dimensions are specified as: General tolerance = \pm (Criteria of tolerance class IT18 in JIS B0401-1998)/2.