

1. INSPECTION

This unit has been thoroughly tested at the factory before shipment. When you receive it, visually inspect it for damage and check the accessories.

1.1 Model number and specification check

Check to see the model number and specifications on the nameplate attached to the lower face of the unit are as ordered.

1.2 Contents of the instruction manual

This instruction manual provides instructions of wiring and mounting methods.

2. GENERAL

This unit supplies power to JUXTA transmitters in bulk. It can mount on rack, DIN rail and wall. Supplying power to transmitters through connector makes it easy maintenance.

Accessories:

Connector with cable	9
Base Assembly	1 set
(Bracket 1 pair	
M4 screw 4, M3 screw 4)	

3. MOUNTING METHOD

3.1 Rack Mounting

- ① Fix power distributor unit to the lower part of panel (FRK-□□) with screw. (See Fig. 1)
- ② In case of wall mounting by using panel (FRK-□□), fix metal fittings direct to the wall and set the power distributor unit on these metal fittings. (See Fig. 2 and 3)

3.2 DIN Rail Mounting

When combining the power distributor unit with the transmitter mounted on DIN rail, fix the metal fittings direct to the wall and set the power distributor unit on these metal fittings. (See Fig. 3 and 4)

4. EXTERNAL WIRING

Use furnished connector with cable of distributor unit and connect the crimp-on terminal (+ red, - white) attached to the top of the cable to power supply terminal of the transmitter. Connect 24V DC general power source to distributor power supply terminal DC IN(+), (-). Fig. 6 shows furnished connector with cable.

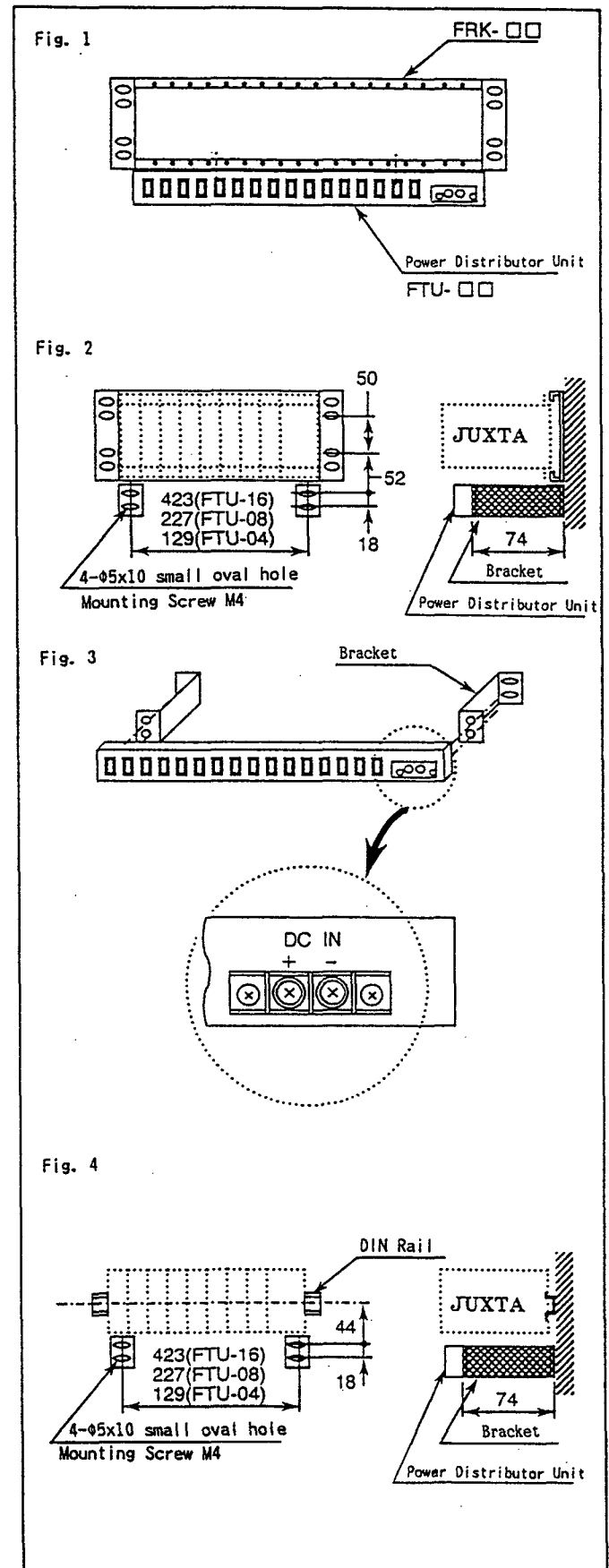


Fig. 5

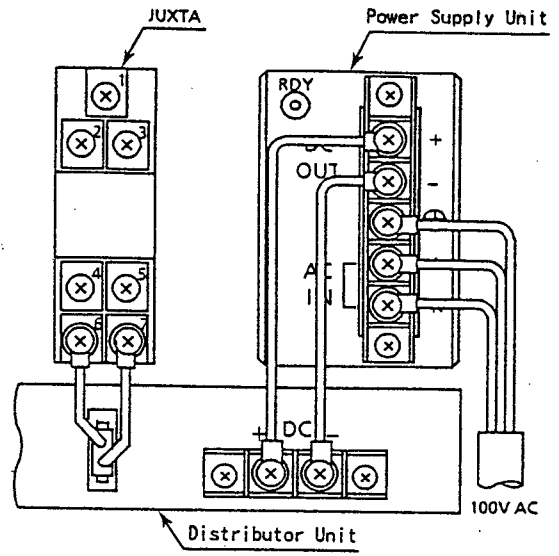
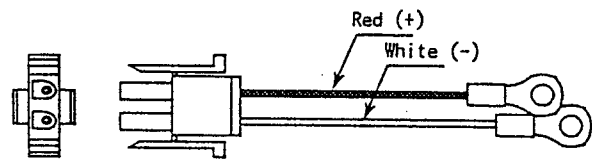


Fig. 6



Subject to change without notice for grade up quality and performance.