

GTS/GTX Turbine Meter Repair Parts List

***4", 6", 8" Turbine Meter
Housing & Cartridge Assembly***

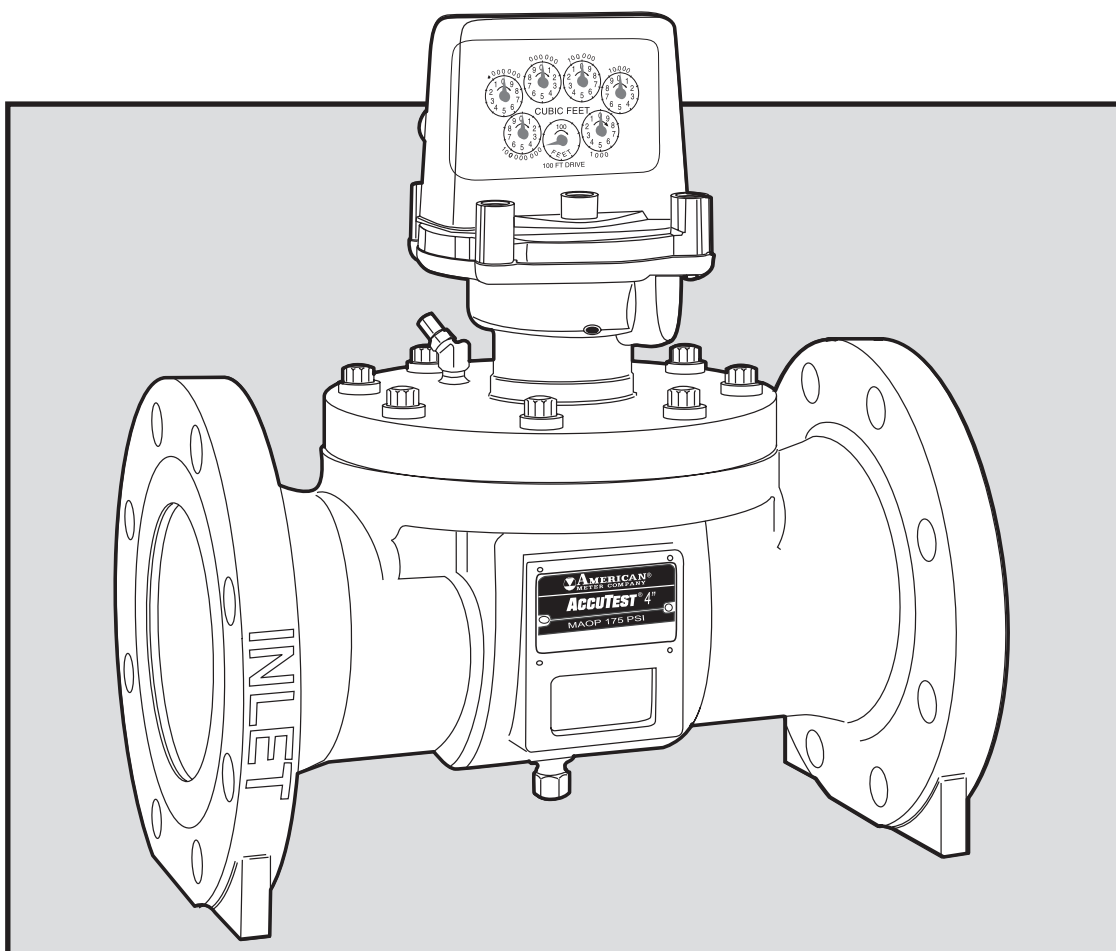


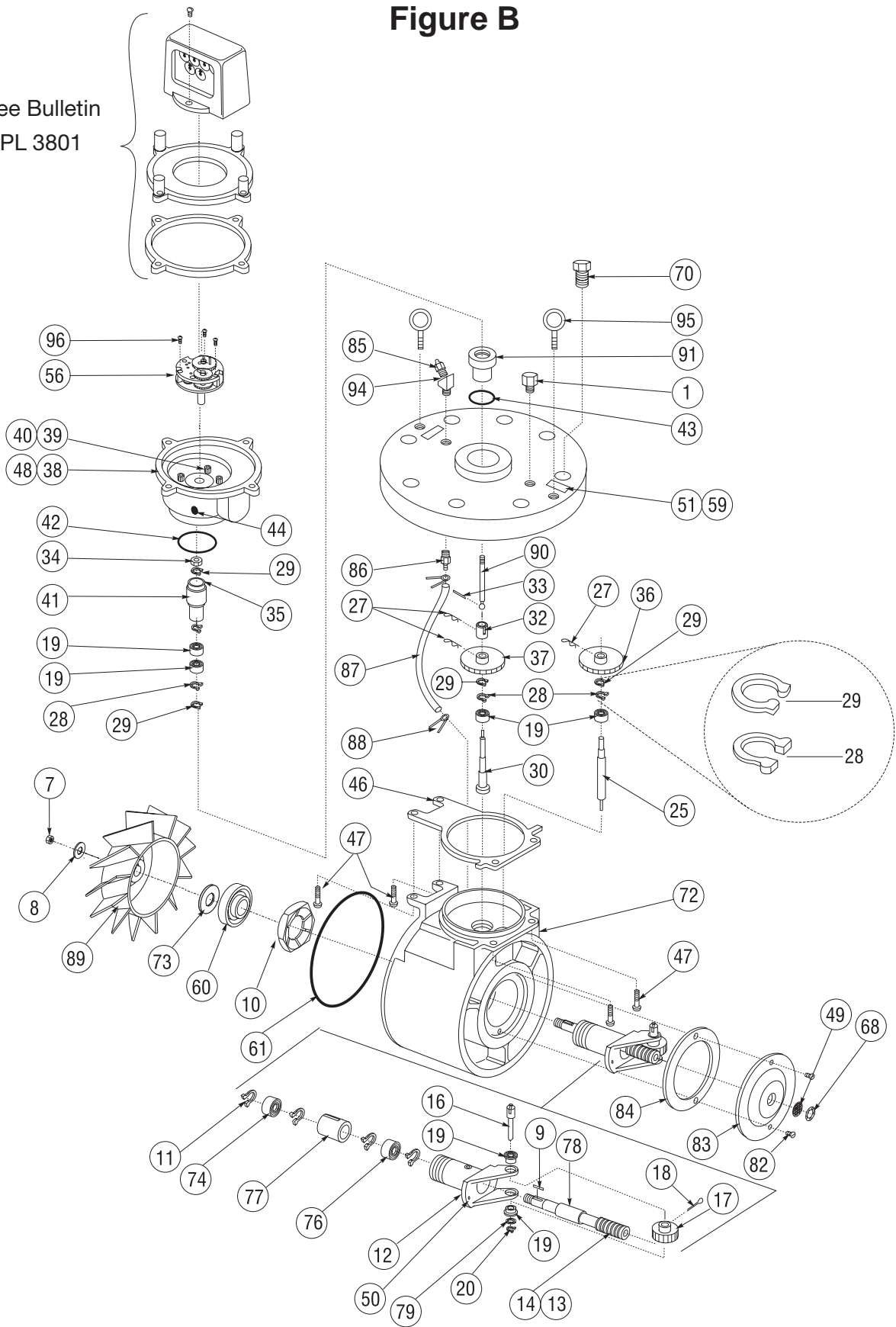
Figure A

Spare Parts Listing

[illegible]

Figure B

See Bulletin
PL 3801

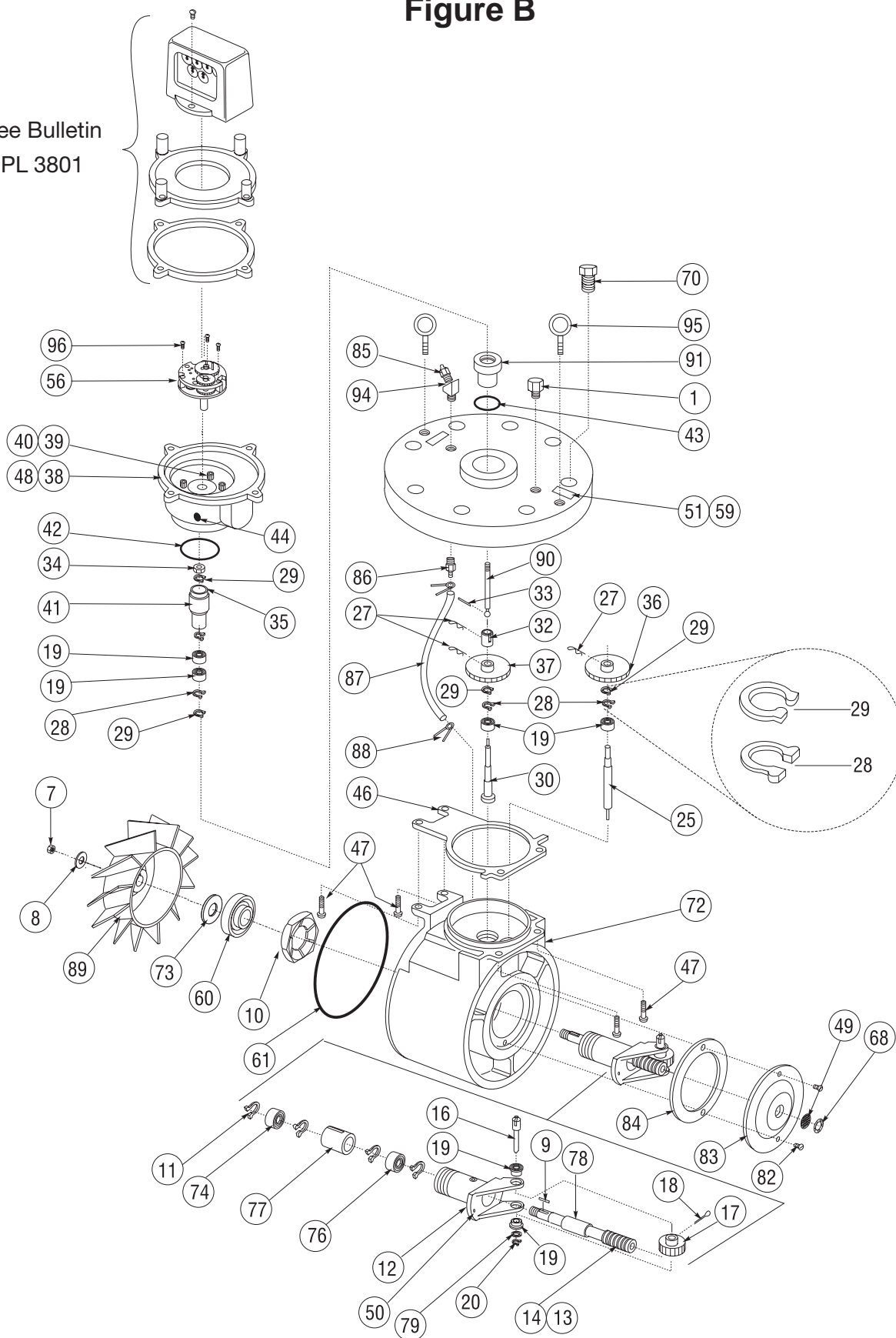


4" GTS\GTX Measurement Cartridge **Figure B** Spare Parts Listing

ITEM #	QTY.	DESCRIPTION	Common Parts Number	GTX	GTS		
				175 PSIG	175 PSIG	720 PSIG	1440 PSIG
1	1	Pipe Plug, 1/4" NPT	11970P001				
2							
3							
4							
5							
6							
7	1	Hex Stop Nut	55606P015				
8	1	Flat Washer	17614P094				
9	1	Roll Pin	90394P078				
10	1	Spring Nut	54514P001				
11	4	Retaining Ring	92943P053				
12	1	Bearing Holder	54509P011				
13	1	Spirol Pin	43435P026				
14	1	Worm	56108P088				
15							
16	1	Drive Shaft	56187P063				
17	1	Worm Gear	56361P009				
18	1	Cotter Pin	11186P030				
19	6	Ball Bearing	56085G021				
20	1	Retaining Ring	92943P039				
21							
22							
23							
24							
25	1	Upshaft	56187P243				
26							
27	3	Cotter Pin	03734P004				
28	3	Retaining Ring	92943P096				
29	4	Retaining Ring	92943P131				
30	1	Adjustment Gear Shaft	56187P241				
31							
32	1	Adjustment Gear Collar	43353P087				
33	1	Spirol Pin	43435P021				
34	1	Hex Nut	22032P055				
35	1	Ring Magnet	26318P018				
36	1	Spur Gear and Hub Assembly	See Page 20				
37	1	Spur Gear and Hub Assembly	See Page 20				
38	1	Magnet Shield	55935P002				
39	4	Socket Head Cap Screw	39727P055				
40	4	Flat Washer	13981P065				
41	1	Magnet Holder	55920P014				
42	1	O-ring	42710P092				
43	1	O-ring	42710P103				
44	2	Vent Screen	32751P002				
45							
46	1	Measuring Element Gasket	39610P296				
47	4	Pan Head Screw	43393P071				
48	1	Gear Train Housing	48828P025				
49	1	Screen	32751P010				
50	1	Groove Pin	56065P022				
51	1	Badge- "Ref. PM "	26777P201				
52							
53							
54							
55							

Figure B

See Bulletin
PL 3801



4" GTS\GTX Measurement Cartridge **Figure B** Spare Parts Listing

ITEM #	QTY.	DESCRIPTION	Common Parts Number	GTX	GTS		
				175 PSIG	175 PSIG	720 PSIG	1440 PSIG
56	1	Gear Train (English)	54548G083				
		Gear Train (Metric)	54548G084				
57	1	Specification Badge (English)	49036P686				
58		Specification Badge (Metric)	49036P711				
59	2	Drive Screw	02197P001				
60	1	Bearing Shield		54532P020	54532P007	54532P007	54532P007
61	1	O-ring			42710P205	42710P205	42710P205
62							
63							
64							
65							
66							
67							
68	1	Retaining Ring			92943P043	92943P043	92943P043
69							
70	8	Hex Head Bolt (1/2-13 x 1.50 Lg.)	58675P068				
71							
72	1	Measurement Element Housing		54508P030	54508P018	54508P018	54508P018
73	A/R	Shim			43146P003	43146P003	43146P003
74	1	Ball Bearing		56085P127	56085G087	56085G087	56085G087
75							
76	1	Ball Bearing		56085P126	56085G041	56085G041	56085G041
77	1	Oiler Pad			93630P016	93630P016	93630P016
78	1	Rotor Shaft		56187P260	56187P244	56187P244	56187P244
79	1	Flat Washer			17614P116	17614P116	17614P116
80							
81							
82	2	Flat Head Screw		43393P054	02651P137	02651P137	02651P137
83	1	Cover Plate		25198P015	25198P010	25198P010	25198P010
84	1	Cover Plate Gasket			01122P109	01122P109	01122P109
85	1	Lubrication Fitting			02876G002	02876G002	02876G002
86	1	Hose Connector			93081P010	93081P010	93081P010
87	1	Plastic Tube			43594P030	43594P030	43594P030
88	2	Hose Clamp			52168P001	52168P001	52168P001
89	1	Main Rotor, 45-degree, Plastic		54511G014	54511G014	54511G014	54511G014
		Main Rotor, 45-degree, Metal			54511P024	54511P024	54511P024
		Main Rotor, 30-degree, Metal			54511P032	54511P032	54511P032
90	1	Locator Shaft	54712P013				
91	1	Locator	55920P032				
92	1	Reducing Coupling (Not Shown)				56209P004	56209P004
93	1	Inline Check Valve (Not Shown)				40324G019	40324G019
94	1	Street Elbow, 45-degree			43280P020		
		Street Elbow, 90-degree				43280P022	43280P022
95	2	Eyebolt			12353P005	12353P005	12353P005
96	3	Round Head Screw	13519P020				

Figure A

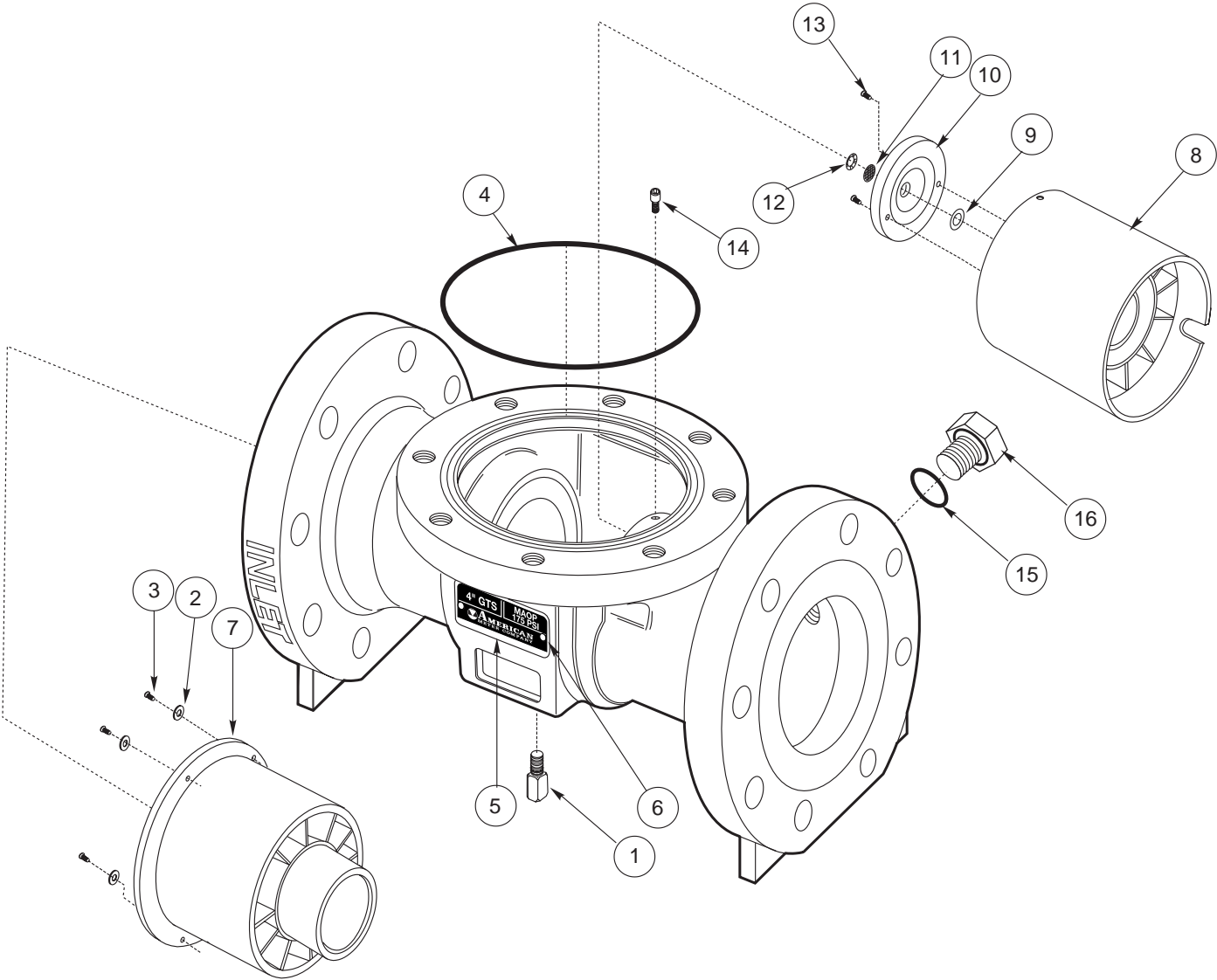
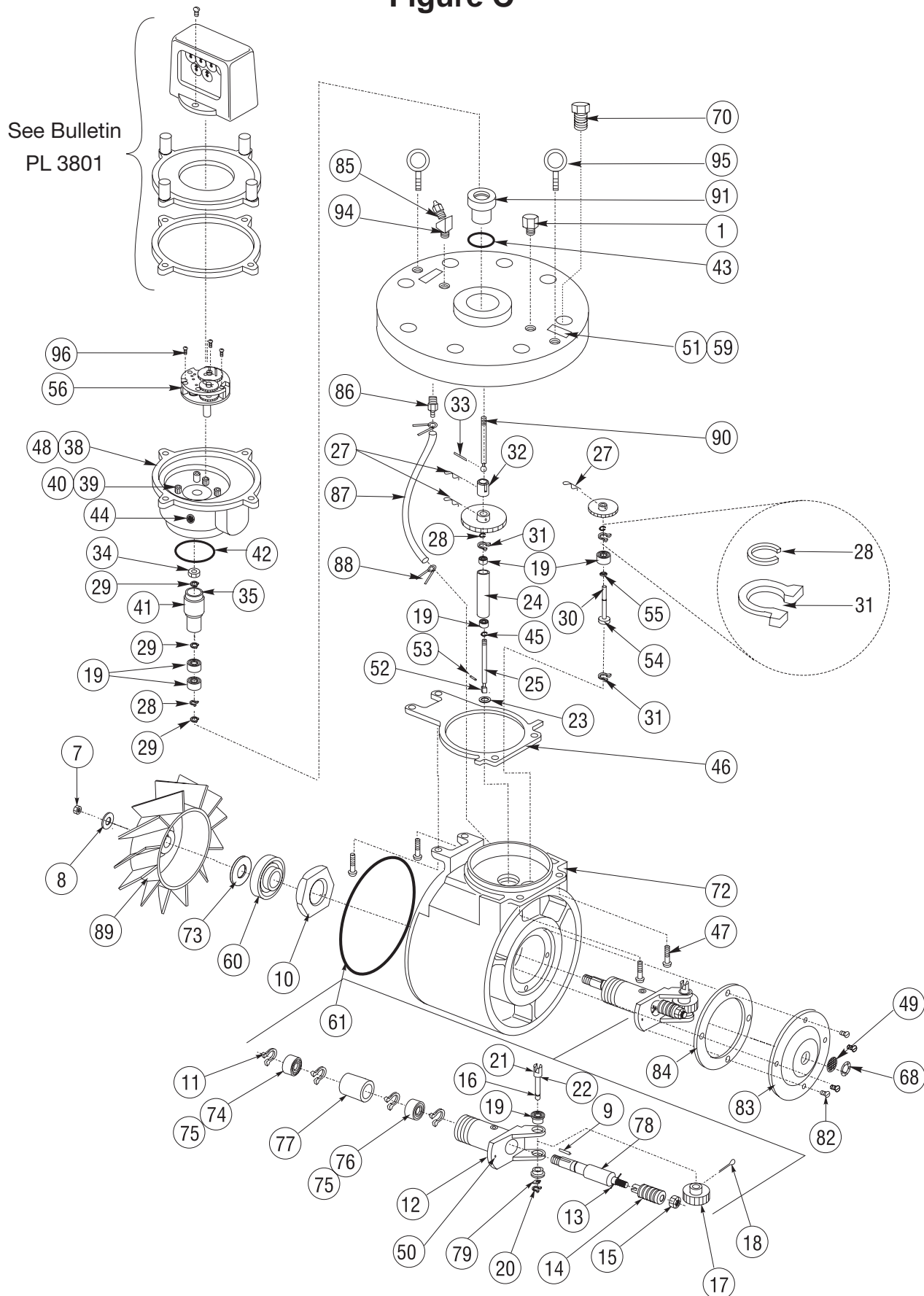


Figure A

Spare Parts Listing

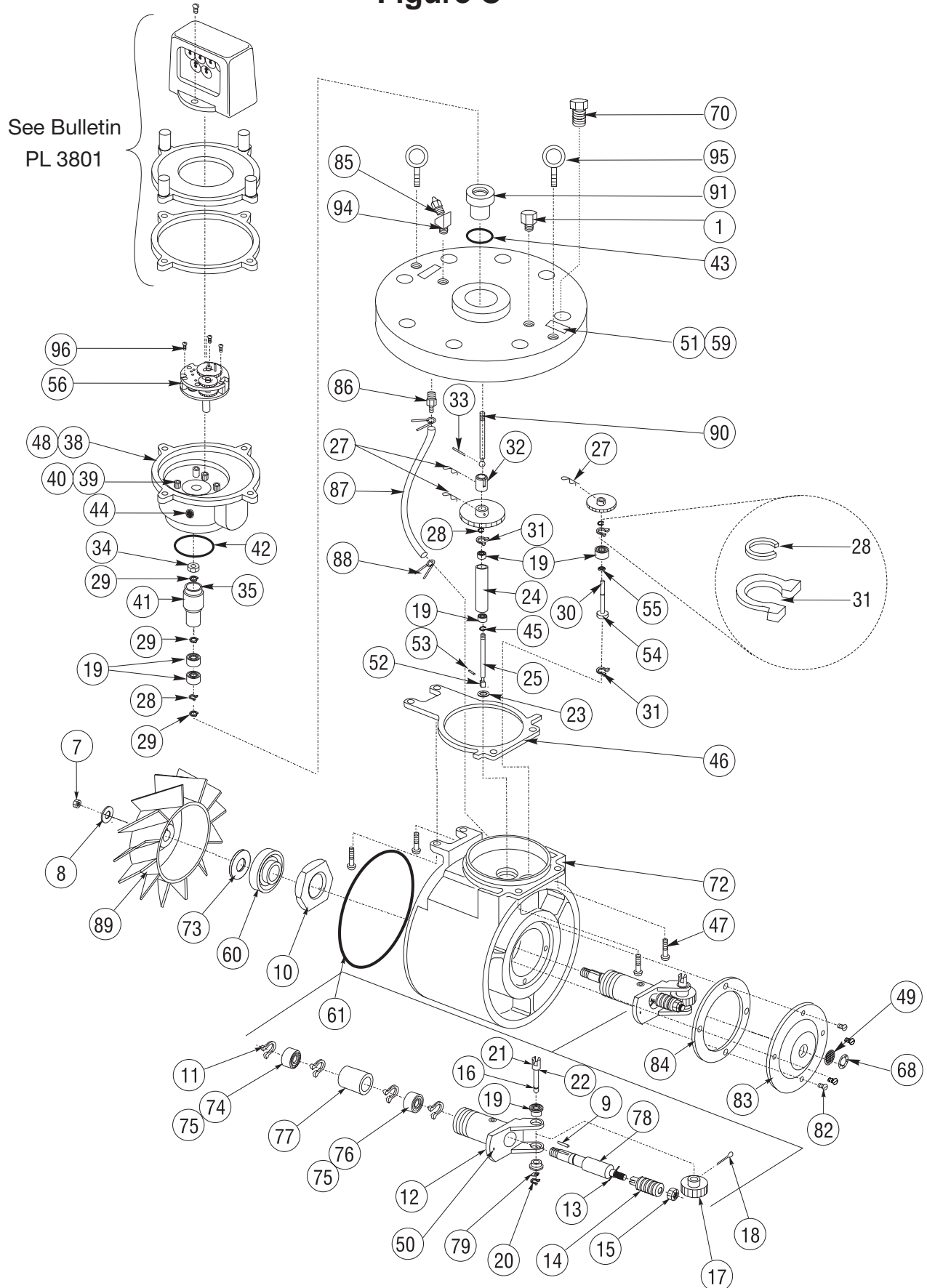
[illegible]

Figure C



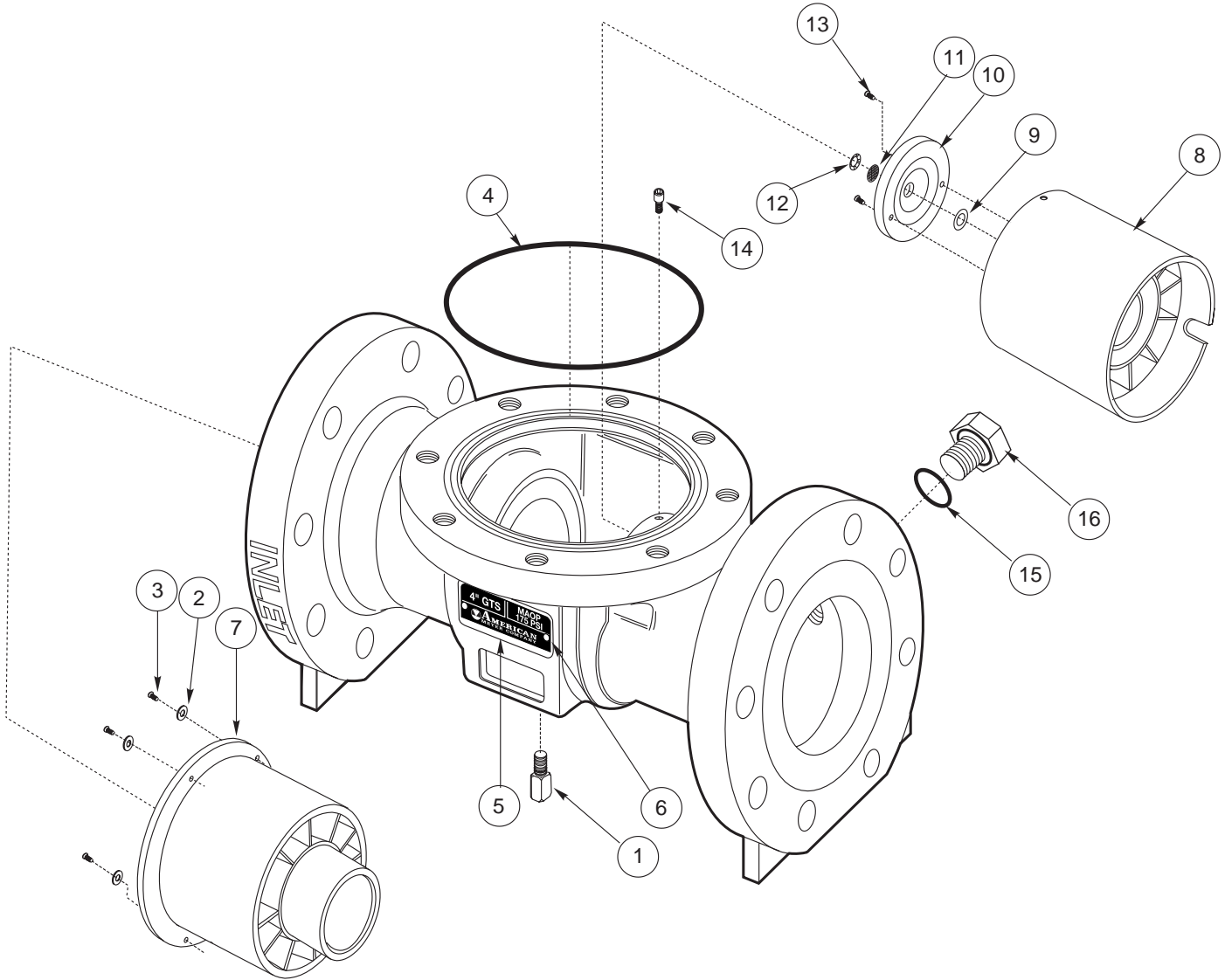
ITEM #	QTY.	DESCRIPTION	Common Parts Number	GTX	GTS		
				175 PSIG	175 PSIG	720 PSIG	1440 PSIG
1	1	Pipe Plug, 1/4" NPT	11970P001		11970P001	11970P001	11970P001
2							
3							
4							
5							
6							
7	1	Hex Stop Nut	55606P017				
8	1	Flat Washer	17614P151				
9	1	Roll Pin	90394P078				
10	1	Hex Nut	43893P006				
11	4	Retaining Ring	92943P024				
12	1	Bearing Holder	54509P012				
13	1	Spirol Pin	43435P022				
14	1	Worm	56108P083				
15	1	Hex Stop Nut	55606P003				
16	1	Drive Shaft	56305P004				
17	1	Worm Gear	12753P002				
18	1	Cotter Pin	11186P030				
19	7	Ball Bearing	56085G021				
20	1	Retaining Ring	92943P039				
21	1	Female Clutch	55926P002				
22	1	Spirol Pin	43435P019				
23	1	Spring Washer	55233P003				
24	1	Upshaft Housing	54536P007				
25	1	Upshaft	56187P245				
26							
27	3	Cotter Pin	03734P004				
28	2	Retaining Ring	92943P096				
29	1	Retaining Ring	92943P097				
30	1	Adjustment Gear Shaft	56187P259				
31	4	Retaining Ring	92943P131				
32	1	Adjustment Gear Collar	43353P087				
33	1	Spirol Pin	43435P021				
34	1	Hex Nut	22032P055				
35	1	Ring Magnet	26318P018				
36	1	Spur Gear and Hub Assembly	See Page 20				
37	1	Spur Gear and Hub Assembly	See Page 20				
38	1	Magnet Shield	55935P002				
39	4	Socket Head Cap Screw	39727P063				
40	4	Flat Washer	13981P065				
41	1	Magnet Holder	55920P014				
42	1	O-ring	42710P092				
43	1	O-ring	42710P103				
44	2	Vent Screen	32751P002				
45	2	Retaining Ring	42978P002				
46	1	Measuring Element Gasket	39610P297				
47	4	Pan Head Screw	43393P071				
48	1	Gear Train Housing	48828P025				
49	1	Screen	32751P010				
50	1	Groove Pin	56065P022				
51	1	Badge - "REF Pm"	26777P201				
52	1	Upshaft Dog	54513P001				
53	1	Upshaft Dog Pin	43435P021				
54	1	Ball Bearing	56085G125				
55	1	Wave Washer	52946P001				

Figure C



ITEM #	QTY.	DESCRIPTION	Common Parts Number	GTX	GTS		
				175 PSIG	175 PSIG	720 PSIG	1440 PSIG
56	1	Gear Train (English)	54548G083				
		Gear Train (Metric)	54548G084				
57							
58	1	Specification Badge (English)	49036P686				
		Specification Badge (Metric)	49036P711				
59	A/R	Drive Screw	02197P006				
60	1	Bearing Shield		54532P021	54532P019	54532P019	54532P019
61	1	O-ring			42710P206	42710P206	42710P206
62							
63							
64							
65							
66							
67							
68	1	Retainig Ring			92943P043	92943P043	92943P043
69							
70	8	Hex Head Bolt (1/2-13 x 1.25 Lg.)		58675P010	58675P010		
		Hex Head Bolt (3/4-10 x 2.00 Lg.)				02488P029	
71		Hex Head Bolt (3/4-10 x 2.50 Lg.)					02488P022
72	1	Measurement Element Housing		54508P031	54508P019	54508P019	54508P019
73	A/R	Shim			43146P004	43146P004	43146P004
74	1	Ball Bearing			56085G088	56085G088	56085G088
75	2	Ball Bearing	56085G019				
76	1	Ball Bearing			56085G019	56085G019	56085G019
77	1	Oiler Pad			93630P017	93630P017	93630P017
78	1	Rotor Shaft		56187P261	56187P246	56187P246	56187P246
79	1	Flat Washer			17614P007	17614P007	17614P007
80							
81							
82	4	Flat Head Screw		43393P054	02651P137	02651P137	02651P137
83	1	Cover Plate		25198P016	25198P011	25198P011	25198P011
84	1	Cover Plate Gasket			39610P292	39610P292	39610P292
85	1	Lubrication Fitting			02876G002	02876G002	02876G002
86	1	Hose Connector			93081P010	93081P010	93081P010
87	1	Plastic Tube			43594P030	43594P030	43594P030
88	2	Hose Clamp			52168P001	52168P001	52168P001
89	1	Main Rotor, 45-degree, Plastic		54511G015	54511G015	54511G015	54511G015
		Main Rotor, 45-degree, Metal			54511P026	54511P026	54511P026
		Main Rotor, 30-degree, Metal			54511P030	54511P030	54511P030
90	1	Locator Shaft		54712P013	54713P013	54712P013	54713P012
91	1	Locator		55920P032	55920P032	55920P032	55920P031
92	1	Reducing Coupling (Not Shown)				56209P004	56209P004
93	1	Inline Check Valve (Not Shown)				40324G019	40324G019
94	1	Street Elbow, 45-degree			43280P020		
		Street Elbow, 90-degree				43280P022	43280P022
95	2	Eyebolt			12353P005	12353P005	12353P005
96	3	Round Head Screw	13519P020				

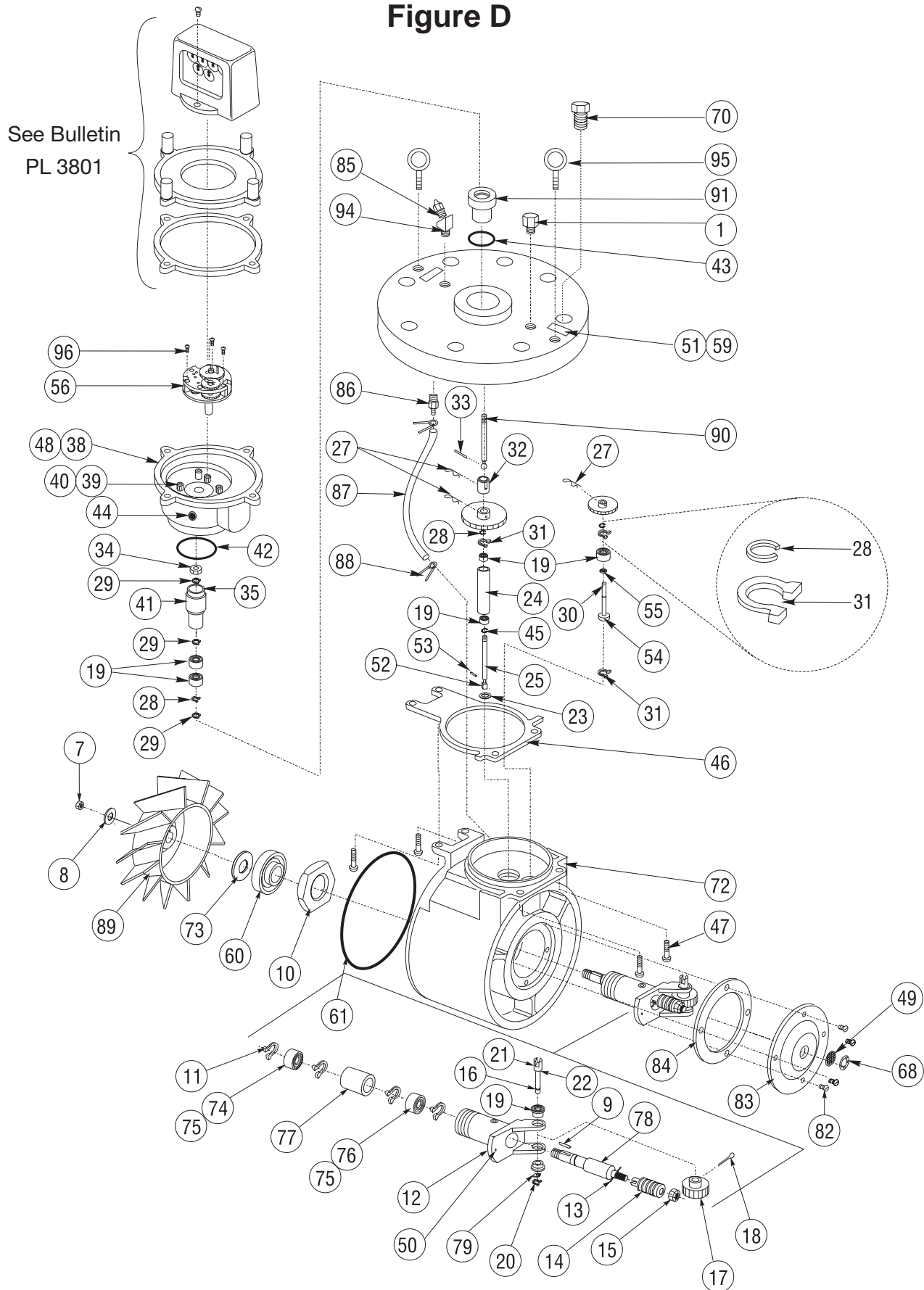
Figure A



Spare Parts Listing

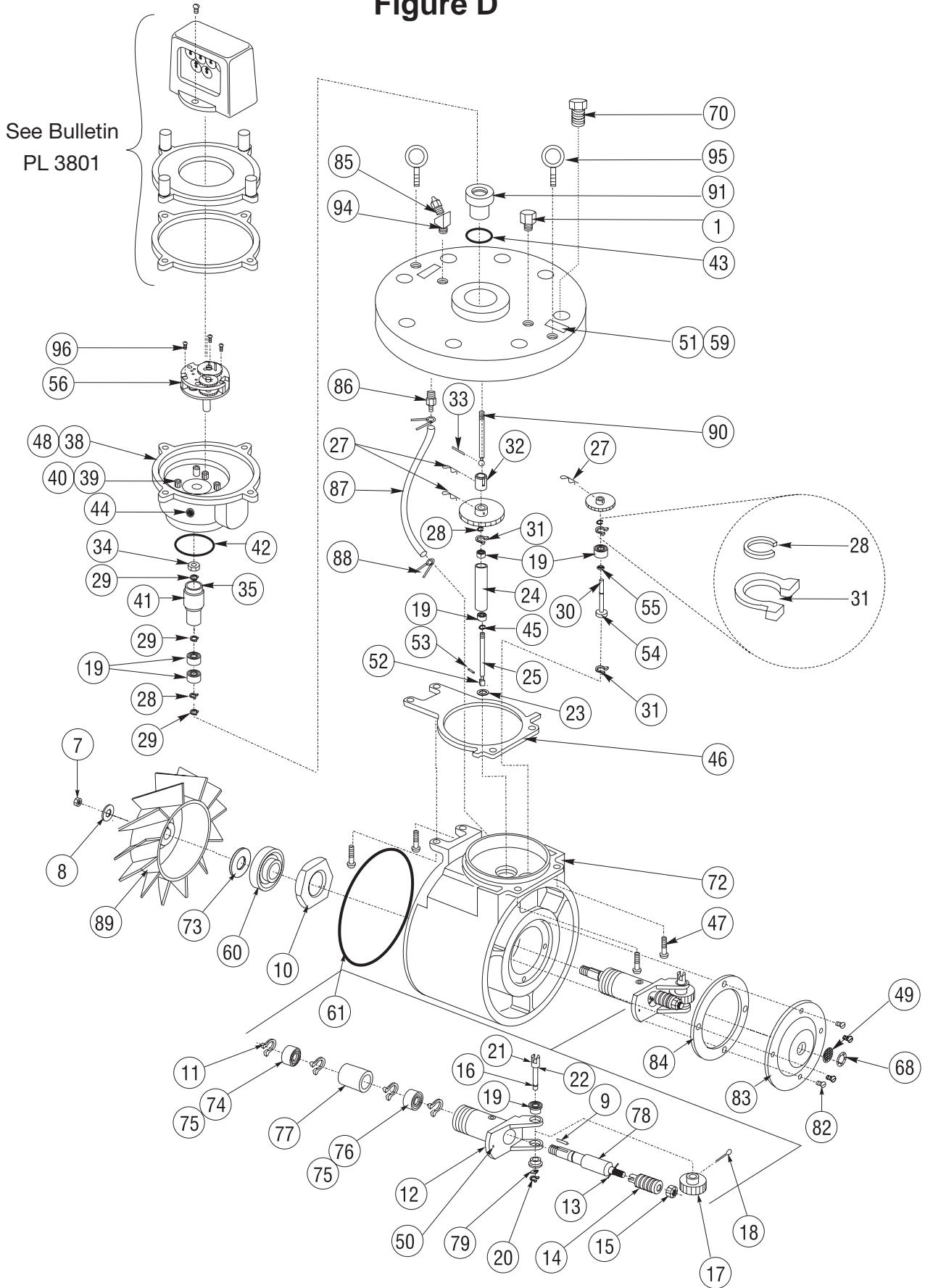
[illegible]

Figure D

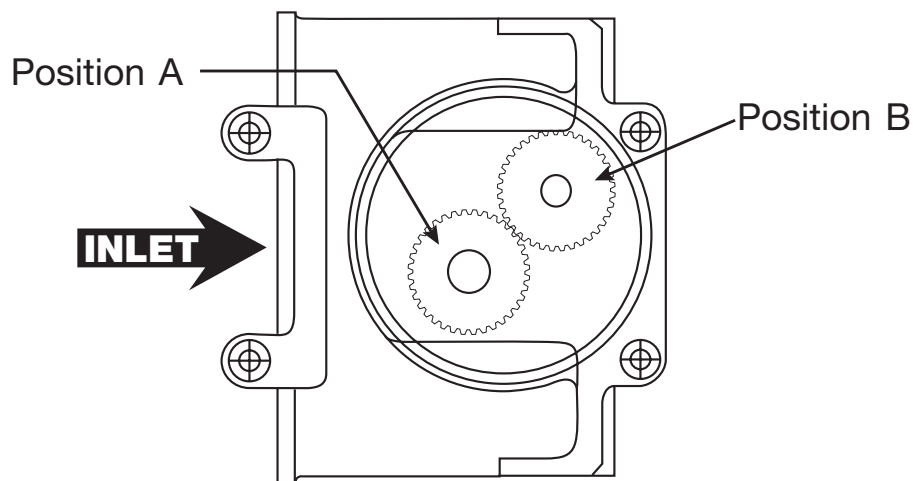


ITEM #	QTY.	DESCRIPTION	Common Parts Number	GTX	GTS		
				175 PSIG	175 PSIG	720 PSIG	1440 PSIG
1	1	Pipe Plug, 1/4" NPT	11970P001				
2							
3							
4							
5							
6							
7	1	Hex Stop Nut	55606P011				
8	1	Flat Washer	17614P174				
9	1	Spring Roll Pin	90394P078				
10	1	Hex Nut	43893P006				
11	4	Retaining Ring	92943P055				
12	1	Bearing Holder	54509P013				
13	1	Spirol Pin	43435P022				
14	1	Worm	56108P082				
15	1	Hex Stop Nut	55606P003				
16	1	Drive Shaft	56305P004				
17	1	Worm Gear	12753P003				
18	1	Cotter Pin	11186P030				
19	7	Ball Bearing	56085G021				
20	1	Retaining Ring	92943P039				
21	1	Female Clutch	55926P002				
22	1	Spirol Pin	43435P019				
23	1	Spring Washer	55233P003				
24	1	Upshaft Housing	54536P006				
25	1	Upshaft	56187P240				
26							
27	3	Cotter Pin	03734P004				
28	2	Retaining Ring	92943P096				
29	1	Retaining Ring	92943P097				
30	1	Adjustment Gear Shaft	56187P259				
31	4	Retaining Ring	92943P131				
32	1	Adjustment Gear Collar	43353P087				
33	1	Spirol Pin	43435P021				
34	1	Hex Nut	22032P055				
35	1	Ring Magnet	26318P018				
36	1	Spur Gear and Hub Assembly	See Page 20				
37	1	Spur Gear and Hub Assembly	See Page 20				
38	1	Magnet Shield	55935P002				
39	4	Socket Head Cap Screw	39727P063				
40	4	Flat Washer	13981P065				
41	1	Magnet Holder	55920P014				
42	1	O-ring	42710P092				
43	1	O-ring	42710P103				
44	2	Vent Screen	32751P002				
45	2	Retaining Ring	42978P002				
46	1	Measuring Element Gasket	39610P298				
47	4	Pan Head Screw	43393P071				
48	1	Gear Train Housing	48828P025				
49	1	Screen	32751P010				
50	1	Groove Pin	56065P022				
51	1	Badge - "REF Pm"	26777P201				
52	1	Upshaft Dog	54513P001				
53	1	Upshaft Dog Pin	43435P021				
54	1	Ball Bearing	56085G125				
55	1	Wave Washer	52946P001				

Figure D



ITEM #	QTY.	DESCRIPTION	Common Parts Number	GTX	GTS		
				175 PSIG	175 PSIG	720 PSIG	1440 PSIG
56	1	Gear Train (English)	54548G083				
57		Gear Train (Metric)	54548G084				
58	1	Specification Badge (English)	49036P686				
		Specification Badge (Metric)	49036P711				
59	A/R	Drive Screw	02197P006				
60	1	Bearing Shield		54532P022	54532P018	54532P018	54532P018
61	1	O-ring			42710P207	42710P207	42710P207
62							
63							
64							
65							
66							
67							
68	1	Retaining Ring			92943P043	92943P043	92943P043
69							
70	8	Hex Head Bolt (1/2-13 x 1.25 Lg.)		02488P027	02488P027		
		Hex Head Bolt (3/4-10 x 2.00 Lg.)				02725P013	
		Hex Head Bolt (3/4-10 x 2.50 Lg.)					02725P011
71							
72	1	Measurement Element Housing		54508P032	54508P023	54508P023	54508P023
73	A/R	Shim			43146P002	43146P002	43146P002
74	1	Ball Bearing			56085G089	56085G089	56085G089
75	2	Ball Bearing		56085G020			
76	1	Ball Bearing			56085G020	56085G020	56085G020
77	1	Oiler Pad			93630P018	93630P018	93630P018
78	1	Rotor Shaft		56187P262	56187P239	56187P239	56187P239
79	1	Flat Washer			17614P007	17614P007	17614P007
80							
81							
82	4	Flat Head Screw		43393P054	02651P137	02651P137	02651P137
83	1	Cover Plate		25198P017	25198P008	25198P008	25198P008
84	1	Cover Plate Gasket			39610P287	39610P287	39610P287
85	1	Lubrication Fitting			02876G002	02876G002	02876G002
86	1	Hose Connector			93081P012	93081P012	93081P012
87	1	Plastic Tube			43594P030	43594P030	43594P030
88	2	Hose Clamp			52168P001	52168P001	52168P001
89	1	Main Rotor, 45-degree, Plastic		54511G013	54511G013	54511G013	54511G013
		Main Rotor, 45-degree, Metal			54511P023	54511P023	54511P023
		Main Rotor, 30-degree, Metal			54511P031	54511P031	54511P031
90	1	Locator Shaft		54712P013	54712P013	54712P013	54712P012
91	1	Locator		55920P032	55920P032	55920P032	55920P031
92							
93	1	Inline Check Valve				40324G019	40324G019
94	1	Street Elbow, 45-degree			43280P020	43280P020	43280P020
95	2	Eyebolt			12353P005	12353P005	12353P005
96	3	Round Head Screw	13519P020				



**Top View
Intermediate Gear Locations**

	4" GTS/GTX/AccuTest		6" GTS/GTX/AccuTest		8" GTS/GTX/AccuTest	
	Position A	Position B	Position A	Position B	Position A	Position B
45° Plastic Rotor	52009G003	52009G004	52009G008	52009G007	52009G012	52009G011
45° Metal Rotor	52009G003	52009G004	52009G014	52009G013	52009G012	52009G011
30° Metal Rotor	52009G009	52009G010	52009G006	52009G005	52009G001	52009G002



Measurement Engineers Since 1836



Represented by:



AMERICAN METER
300 Welsh Road,
Building One
Horsham, PA 19044-2234
Ph.: 215-830-1800
Fax: 215-830-1890
www.americanmeter.com

AMC Quality System
QMI is Accredited by:



CANADIAN METER
275 Industrial Road
Cambridge, Ontario
Canada N3H 4R7
Phone: 519-650-1900
Fax: 519-650-1917
www.canadianmeter.com

American Meter Company has a program of continuous product development and improvement; and, therefore, the information in this bulletin is subject to change or modification without notice.